



WIEF

Roundtable Kota Kinabalu 2020

Economic Rejuvenation: The Path to Growth

12 - 13 MARCH | MAGELLAN SUTERA RESORT, SABAH, MALAYSIA

SOARING ON THE WINGS OF CHANGE

Sec. Emmanuel F. Piñol, Ph.D.
Chairman, Mindanao Development Authority
Republic of the Philippines

Host



Ministry of Trade and Industry

Organiser



REGIONAL ECONOMIC DEVELOPMENT WILL BE SPURRED WITH THE ESTABLISHMENT OF INDONESIA'S CAPITAL IN EAST KALIMANTAN



CAPITALS OF BIMP-EAGA STATES ARE NOW WITHIN 2 HOURS FLYING TIME OF EACH OTHER



CONSTRUCTION BOOM, JOB GENERATION AND MASSIVE RAW MATERIALS SUPPLY REQUIREMENT



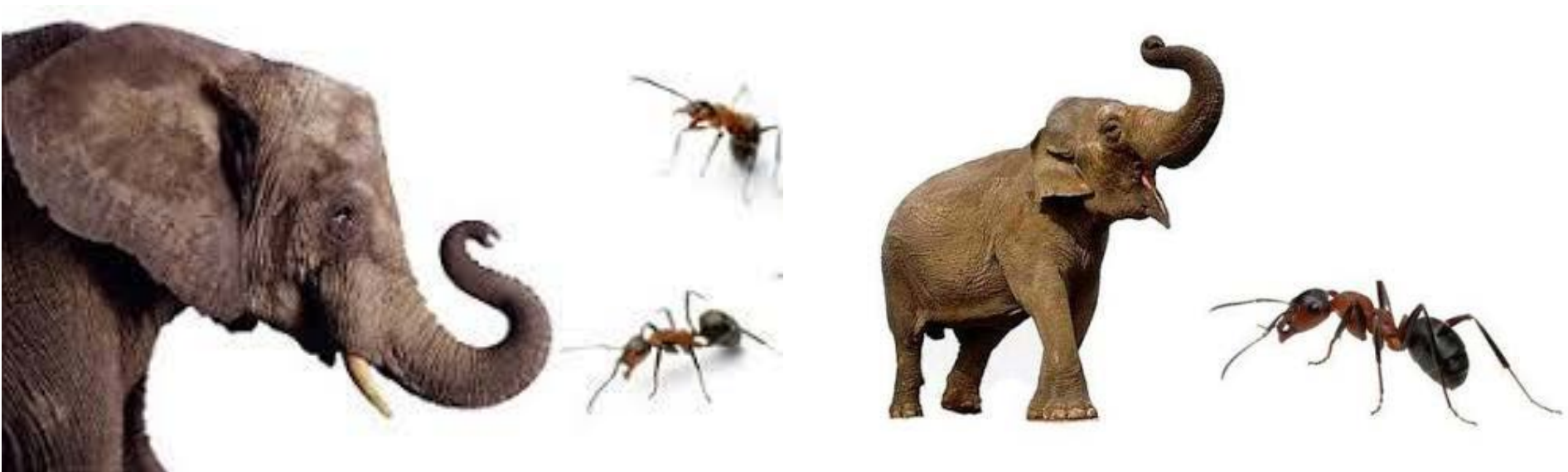
FOCUS SHIFT TO BIMP QUADRANGLE OPENS A MARKET OF 900-M CONSUMERS



INDONESIA MUST LEAD THE WAY TO A STRENGTHENED REGIONAL MARKET



BIMP MUST BUILD A SELF-SUSTAINING AGRICULTURE AND ECONOMY





INSHALLAH! SUKRAN!