

12TH WIEF

WORLD ISLAMIC ECONOMIC FORUM

JAKARTA, INDONESIA | 2-4 AUGUST 2016

Dr Tanri Abeng

Rektor TANRI ABENG UNIVERSITY
Chairman, PT. Pertamina Persero





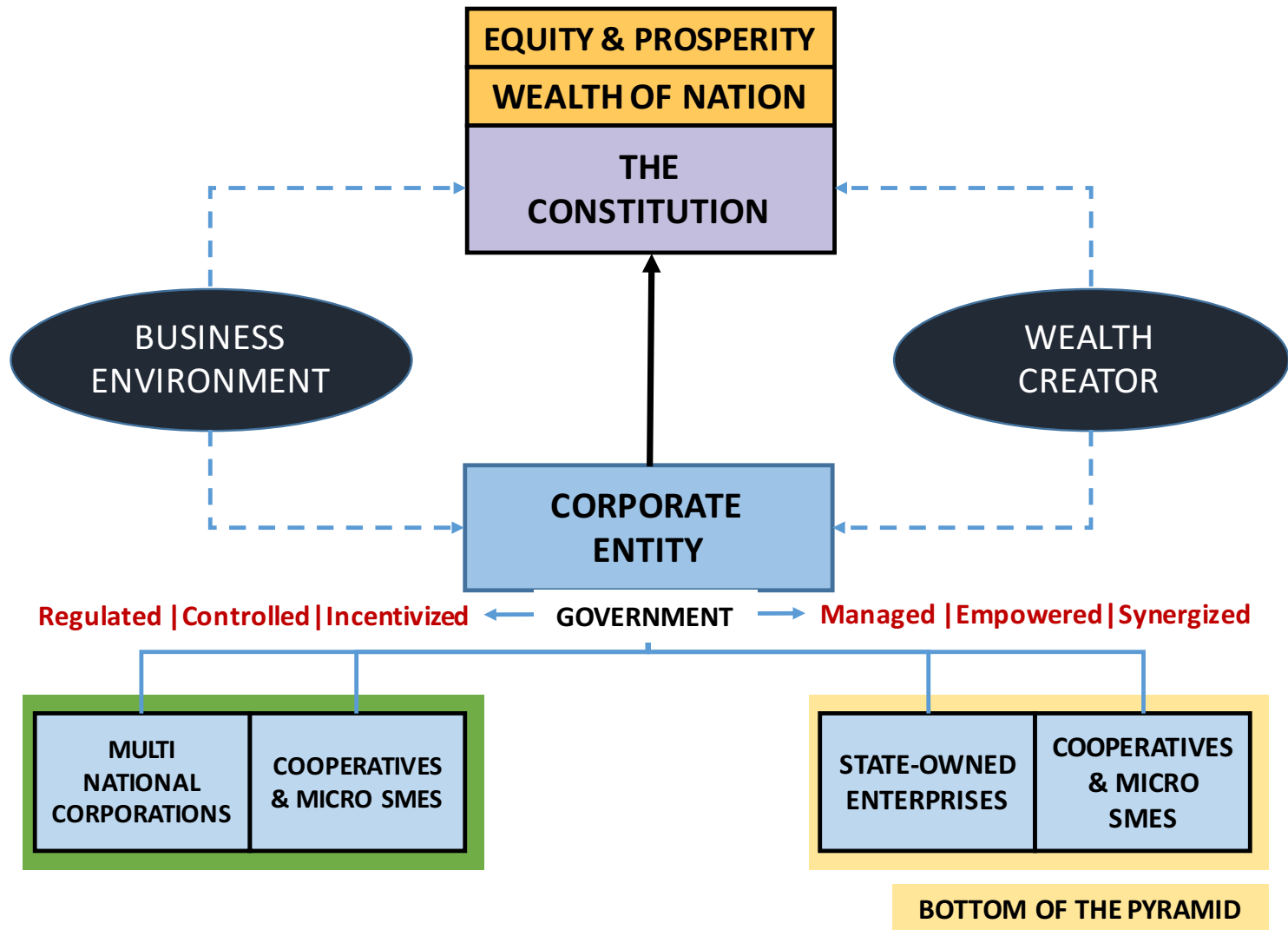
TANRI ABENG
UNIVERSITY
Career Ready Professionals

BUMRA (People's Owned Enterprise)

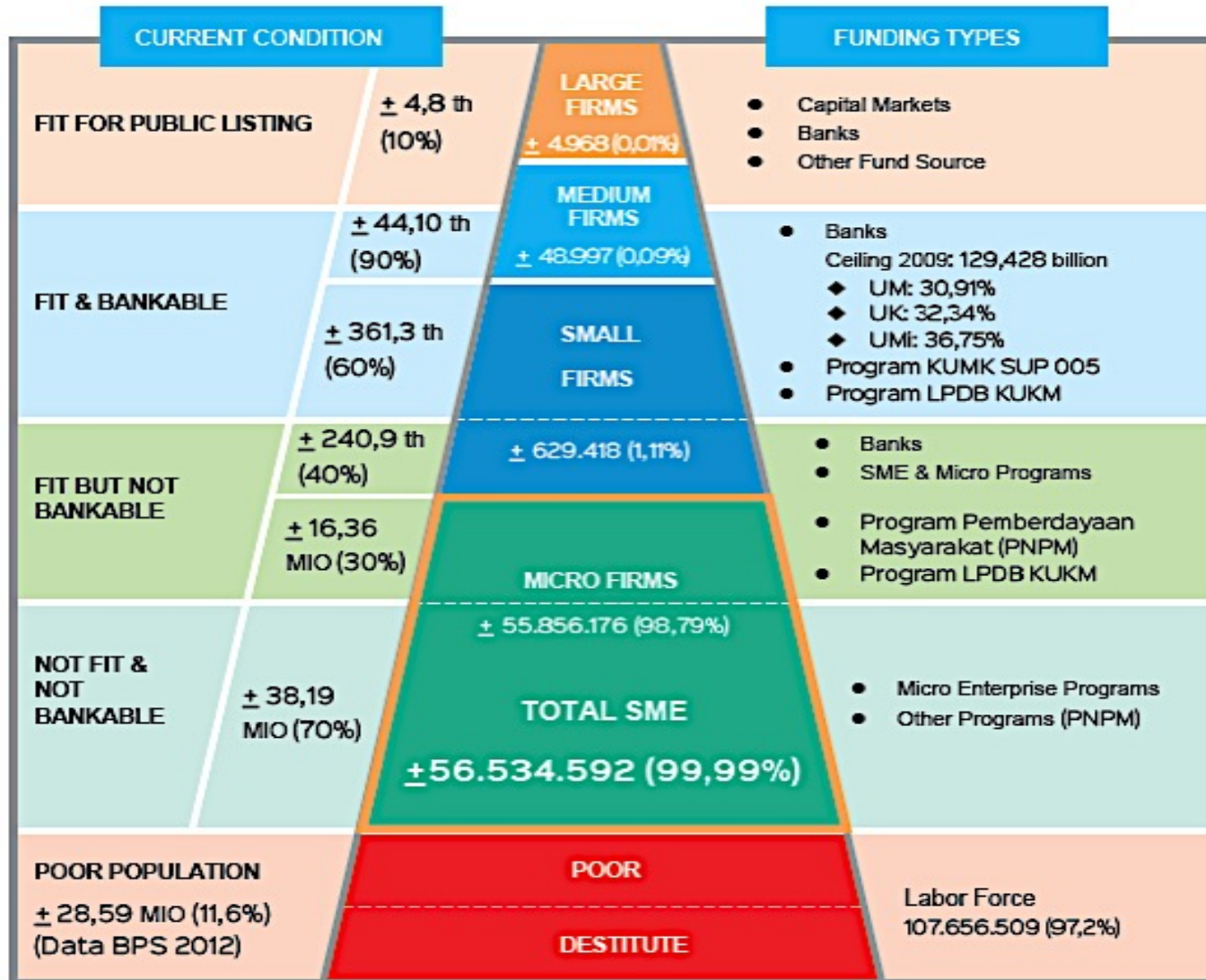
Achieving Economic & Financial Inclusiveness by Restructuring SMEs and Cooperatives



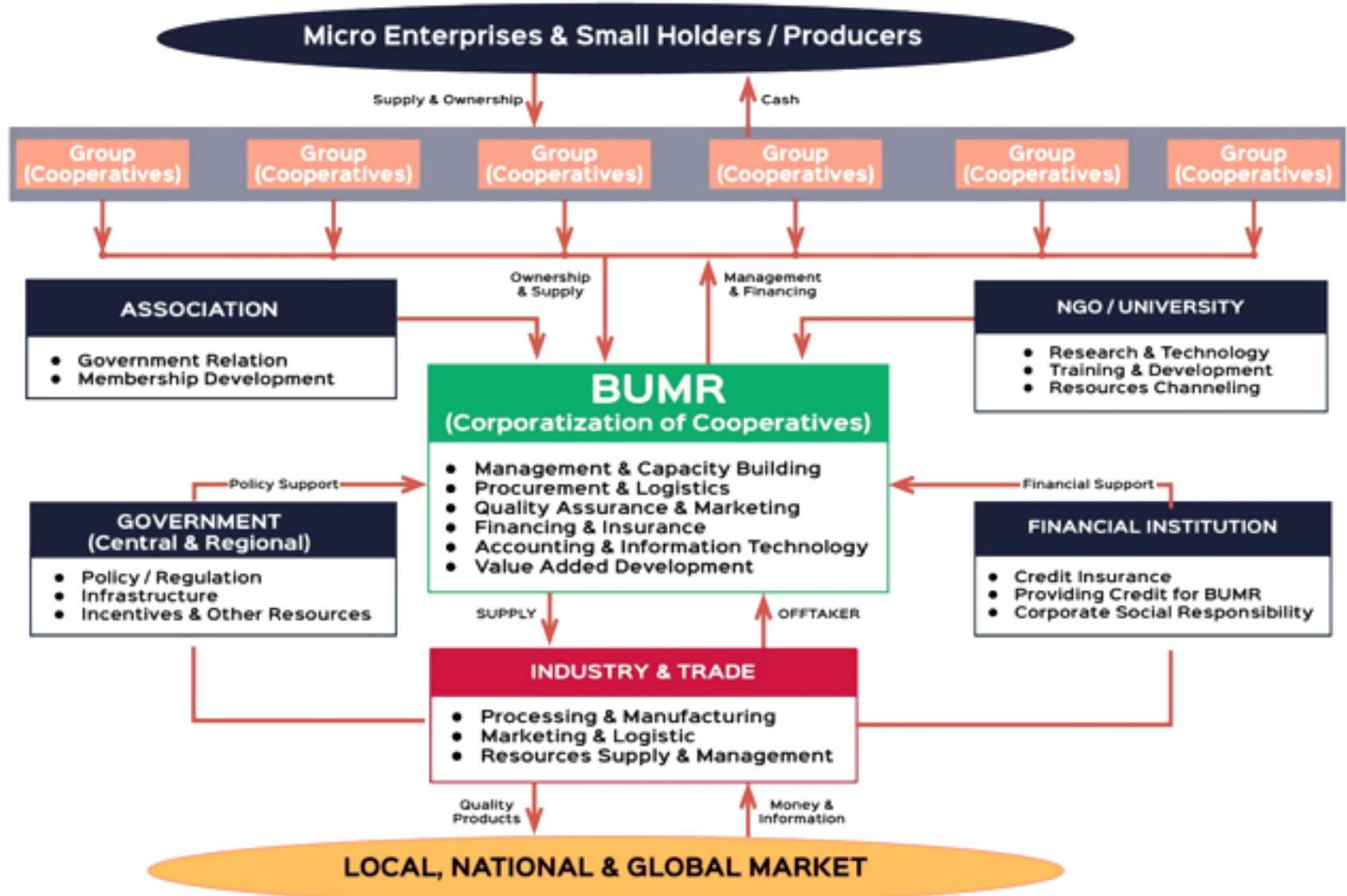
The Economic Actors



The Pyramid Of Indonesian Enterprises



BUMRA – TA MODEL



BUMRA – BUSINESS VALUE CHAIN

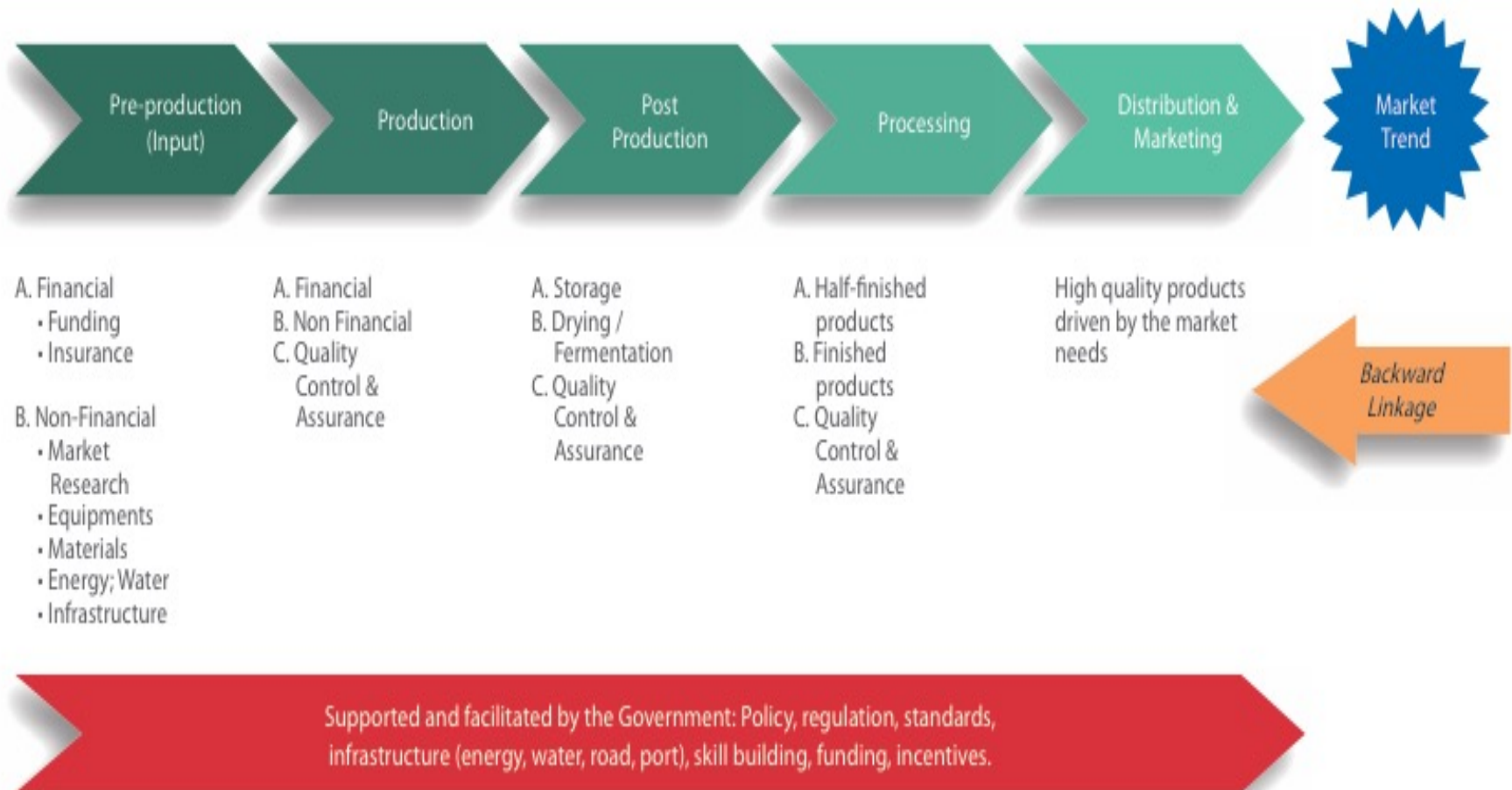
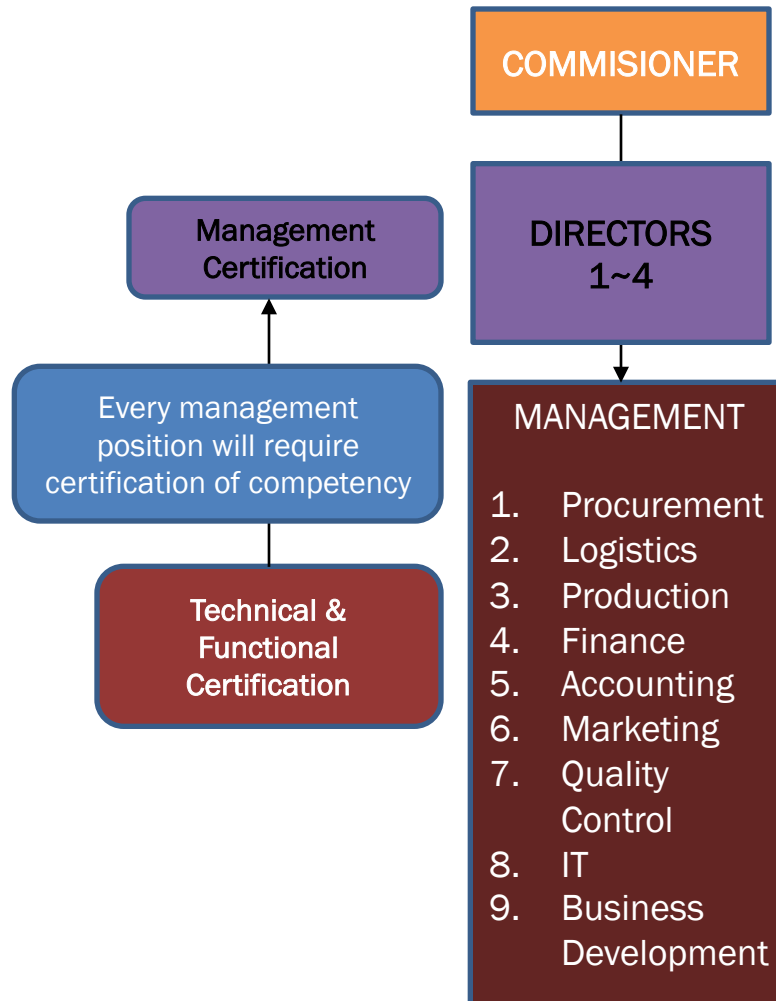


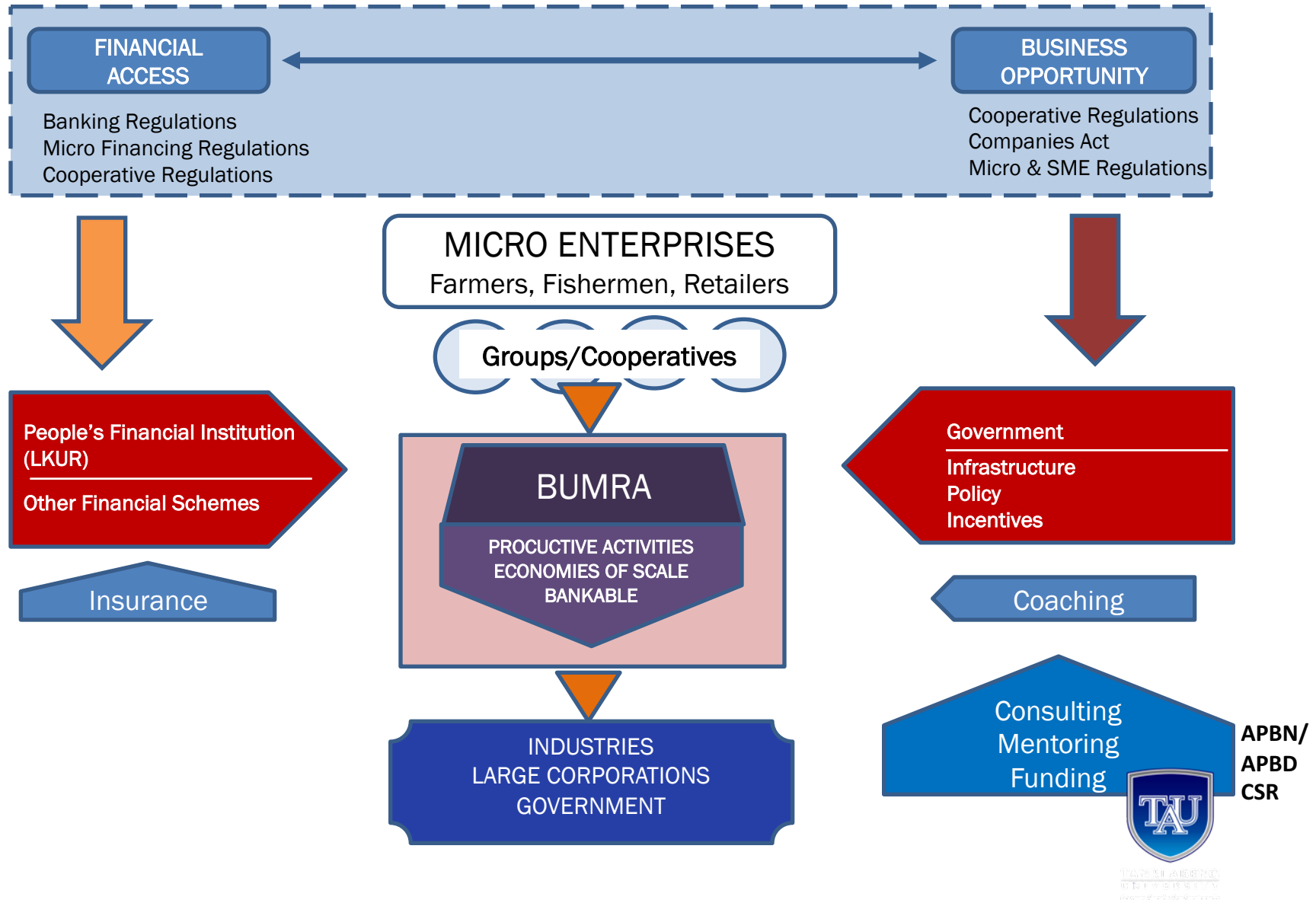
Figure 10. Value Chain Analysis - Commodity Sector

BUMRA – MANAGEMENT STRUCTURE



BUMRA takes the form of a corporate organization, professionally managed, structured & systemized

BUMRA – Financial Inclusion



THE BUMRA EFFECT



- Growth (pro-growth) from the bottom of the pyramid
- Poverty Alleviation (pro-poor)
- Employment Creation (pro-job)
- Equity and Alignment (equity and equality)
- Food and Energy Security
- Improving Competitiveness - cost effective and high-quality products
- Price Stabilization & Mitigate Inflation
- Strengthening Rupiah & Improved Foreign Exchange
- Overcoming Inequality, Urbanisation and Insecurity